



2023 MEDIA KIT



Build Beyond Boundaries.

ABOUT US

We are an offsite modular builder of prefabricated lodging for residential and hospitality use.

as seen in:

hospitality design

enki
THE HOUSE OF DESIGN & ARCHITECTURE

AMERICAN INNO

INHABITAT

WASHINGTON
BUSINESS JOURNAL

Bloomberg



hospitality design
Product Category:
Sustainable Solutions

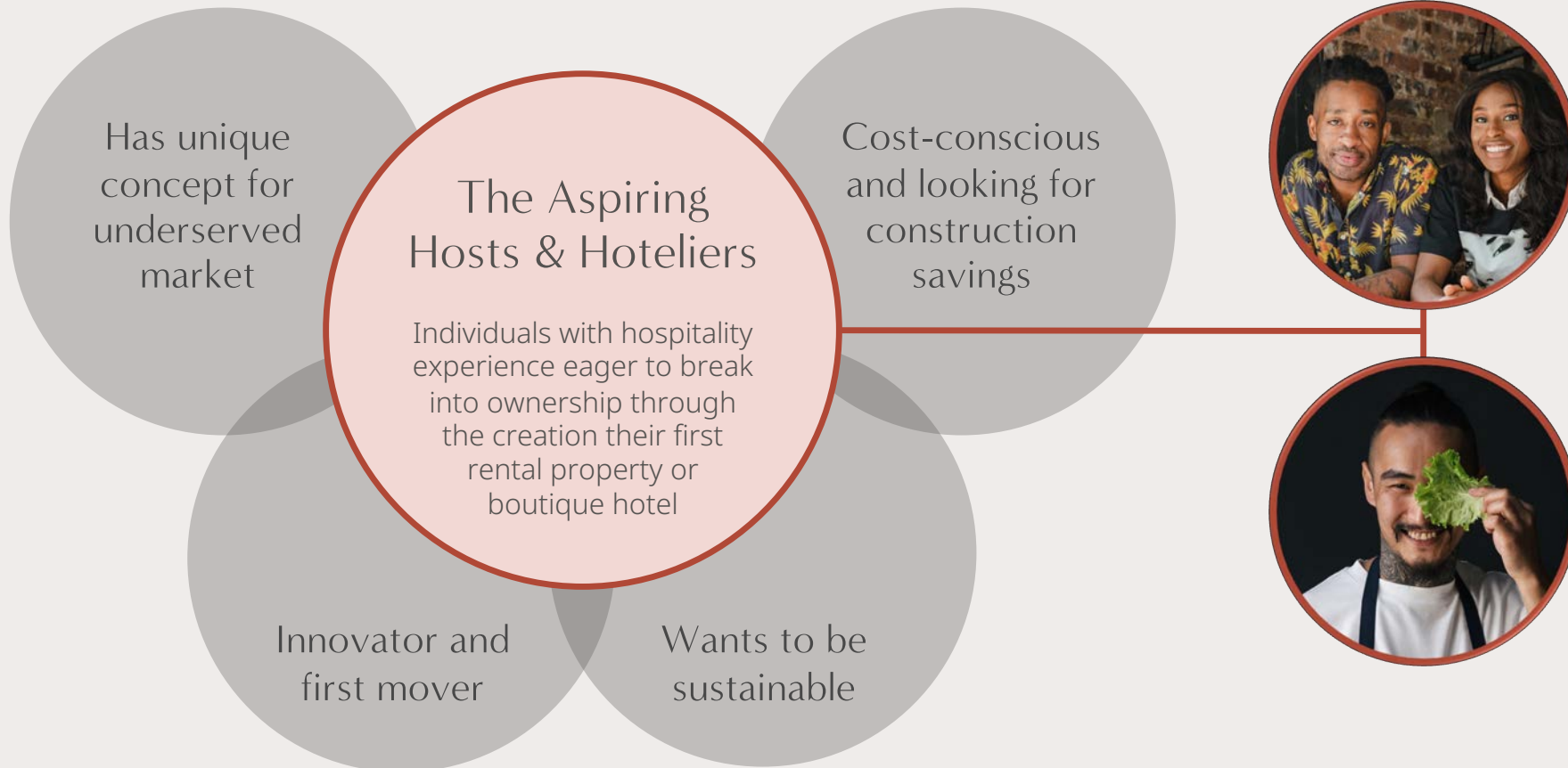
2023
hospitality design
awards
FINALIST

OUR MISSION

Empowering the aspiring hotelier using empathetic design and building innovation to create more diverse hospitality experiences for all

WHO WE SERVE

Our clients lead the hospitality trends
that the industry follows



Our Muses:

(Real people, names/photos altered)

Darren & Alisha

Hospitality Veterans

Feels the industry underserves black travelers and wants to create a getaway hotel with culturally-influenced design and amenities



Alex

Chef & Restaurateur

Wants to share his unique style of cuisine inspired by his multi-racial upbringing in his new all-inclusive hotel/restaurant concept



OUR OFFERING



Pre-Designed (no minimums)

The Tomu Villa Collection is delivered ready to occupy in our aesthetic with base pricing including finished kitchen and bathroom with add-on options available.

- Set interior and exterior finishes
- Optional add-on options available



Configurable (commercial only)

For our multi-unit hospitality clients, we offer customizable options to meet their project criteria with our base pricing starting at the raw shell and bid to client specifications.

- Customizable interior and exterior finishes
- Additional floor plan and orientation options

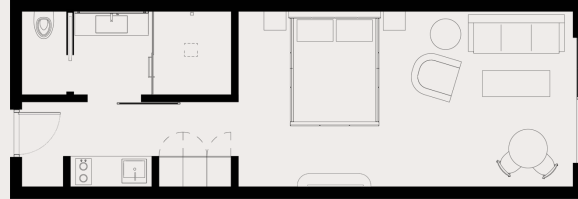
EXAMPLE FLOOR PLANS



Junior Room

240 Sq Ft (20' x 12')

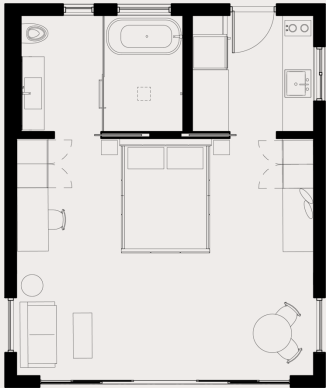
Starting at \$85,000.00 USD



Standard Room

432 Sq Ft (36' x 12')

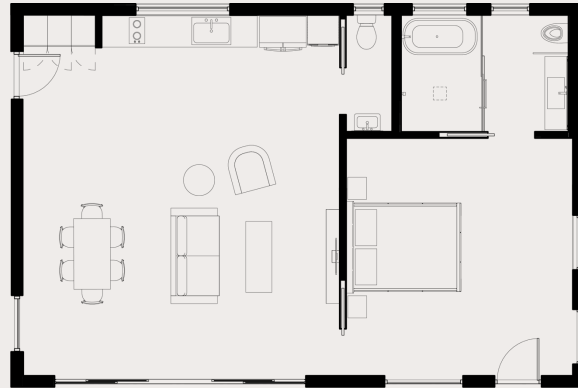
Starting at \$125,000.00 USD



Studio Villa

480 Sq Ft (20' x 24')

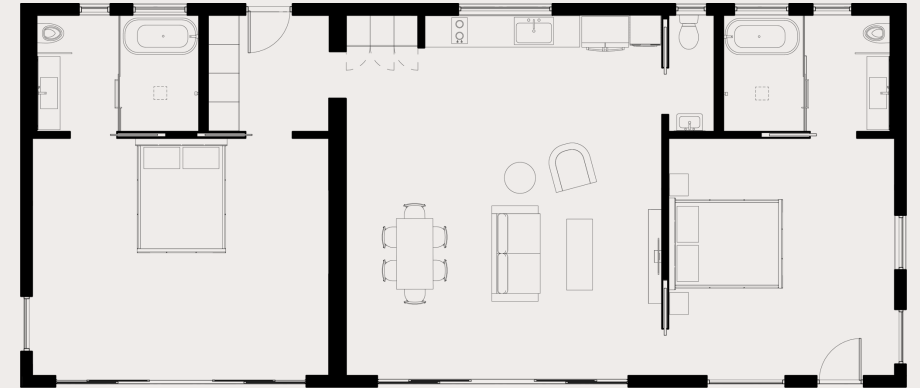
Starting at \$145,000.00 USD



1-Bedroom Villa

864 Sq Ft (36' x 24')

Starting at \$235,000.00 USD



2-Bedroom Villa

1344 Sq Ft (56' x 24')

Starting at \$325,000.00 USD

Using our modular building system, Tomu can work with you on custom room specifications for projects over 20 units.

Guest rooms can be configured in both fully detached and shared-wall room block arrangements.

Pricing is based on modifications and material specifications provided by the client on a project-by-project basis.







WHY TOMU?



Designed for hospitality use vs. residential



Generous room sizes not "tiny homes"



Multi-unit configurations for high-density



Customizable interior and exterior finishes



Other
Modular
Builders



OUR TEAM



**CHRIS
OSAKA**

Chief
Executive
Officer

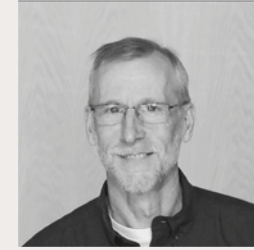
Chris is experienced in brand marketing and consumer experience with a background in hospitality and retail. Prior to Tomu, Chris held corporate leadership roles within **Hilton** and **Nike/Jordan** where he's led functions ranging from global digital brand marketing and new store development.



**DARIUS
KUZMICKAS**

Chief
Design
Officer

Darius is an architect, interior designer and architectural photographer with over 25 years of experience. He received his Masters in Architecture from the University of Utah before joining **Marnell Corrao Associates** in Las Vegas. Past hospitality projects include work on the **Wynn, Bellagio, MGM, and New York-New York.**



**MALCOLM
JOHNSON**

Chief
Operating
Officer

Malcolm has over 40 years of residential and commercial construction project management experience. His experience includes sustainable ground-up development of residential complexes and multi-store commercial build-outs for franchise companies **Dominos** and **Subway**.



**CHERYL
HELLER**

Chief
Financial
Officer

Cheryl has 25+ years of experience in the financial services industry, previously serving as CFO for **Capital One's** Retail Bank and CFO for **Hive Wealth**. She currently works with start-ups to help develop a well-managed financial infrastructure serving as a Senior Finance Executive.



**BRAD
GLEESON**

Head of
Business
Development

Brad has 35+ years of specializing in global business development, revenue acceleration, and go-to market strategy. He is currently the Managing Partner of **TargetPath**, an independent consulting firm and previously held multiple Chief Commercial Officer and Head of Business Development roles.



**KASEY
O'LEARY**

Advisory
Board
Member

Kasey has over 20 years of experience across global brands, leading advertising agencies and start-ups. She is currently the Chief Marketing Officer for **The Original Fit Factory** based in the UK. Kasey previously served as Vice President, Global Enterprise & Loyalty Marketing at **Hilton**.

“

Tomu started as a means of fulfilling our vision of hospitality; it has become a means of enabling others to fulfill theirs.

”

We hope you'll join us.





If you're interested in sharing the Tomu story, say hello! We're happy to answer any questions you may have about our company's products, inspirations, goals and industry outlook.

✉ press@tomuhaus.com

🔗 tomuhaus.com/media

Please credit to 'Tomu, Inc.' in print and digital publications, or tag **@tomu_haus** on social media.

Media Contacts:

👤 Sherry Moeller, *Moki Media*

📱 +1 (310) 807-0910

✉ sherry.moeller@mokimedia.com

👤 Jessica Scott, *Moki Media*

📱 +1 (410) 241-3296

✉ jessica.scott@mokimedia.com

